



# ST MICHAEL AT BOWES

Primary to Secondary Transfer  
Applying for September 2021

# Types of Schools



✶ **Community** – the Local Authority (elected Councillors) is responsible for deciding the admission arrangements for pupils

✶ **Foundation** – the School's Governing Body is responsible for deciding the admission arrangements for pupils



# Types of Schools

- ✦ **Voluntary Aided** - the School's Governing Body is responsible for deciding the admission arrangements for pupils
- ✦ **Academy and Free schools** – publicly funded state schools. The Academy Council or School Governors are responsible for deciding the admission arrangements

# Schools in Enfield



**AIM North London**

**Aylward Academy (A)**

**Broomfield ( F)**

**Edmonton County (A)**

**Enfield Grammar (A)**

**Highlands (C)**

**Lea Valley High School (A)**

**Oasis Academy Hadley (A)**

**St Ignatius RC College (VA )**

**The Latymer (VA)**

**Wren Academy, Enfield (A)**

**ARK John Keats (A)**

**Bishop Stopford's CE (VA)**

**Chace Community (C)**

**Enfield County School for Girls(C)**

**Heron Hall Academy (A)**

**Kingsmead (A)**

**Oasis Academy Enfield (A)**

**St Anne's RC ( VA )**

**Southgate ( A )**

**Winchmore ( C )**

# AT A GLANCE

## Borough School Map



### KEY

1. AIM North London
2. Ark John Keats Academy
3. Aylward Academy
4. Bishop Stopford's School
5. Broomfield School
6. Chase Community School
7. Edmonton County - Bury Campus

8. Edmonton County - Cambridge Campus
9. Enfield County - Lower School
10. Enfield County - Upper School
11. Enfield Grammar - Lower School
12. Enfield Grammar - Upper School
13. Heron Hall Academy
14. Highlands School
15. Kingmead School
16. Lea Valley Academy

17. Oasis Academy Enfield
18. Oasis Academy Hadley
19. St. Anne's - Lower School
20. St. Anne's - Upper School
21. St. Ignatius College
22. Southgate School
23. The Latymer School
24. Winchmore School
25. Wren Academy Enfield (Location from September 2021)

School	Headteacher/Principal	Type of School	Boys/ Girls	Supplementary form required
AIM North London (1) Turin Road, Edmonton, N9 8DQ	Mrs C Darley	Academy	Mixed	No
Ark John Keats Academy (2) Bell Lane, Enfield, EN3 5PA	Ms J Factor	Academy	Mixed	No
Aylward Academy (3) Windmill Road, Edmonton, N18 1NB	Mr R Iafate	Academy	Mixed	No
Bishop Stopford's CE (4) Brick Lane, Enfield, EN1 3PU	Mrs T Day	Voluntary Aided	Mixed	Yes
Broomfield (5) Wilmer Way, Southgate, N14 7HY	Mr P Travis	Foundation	Mixed	No
Chase Community (6) Churchbury Lane, Enfield, EN1 3HQ	Mr D Bruton	Community	Mixed	No
Edmonton County Bury Campus (7) Little Bury Street, Edmonton, N9 9JZ	Dr S Tranter	Academy	Mixed	No
Edmonton County Cambridge Campus (8) Great Cambridge Road, Enfield, EN1 1HQ				
Enfield County Lower School (9) Rosemary Avenue, Enfield, EN2 0SP	Ms J Gumbrell	Community	Girls	No
Enfield County Upper School (10) Holly Walk, Enfield, EN2 6QG				
Enfield Grammar Lower School (11) Enfield Court, Baker Street, Enfield, EN1 3EX	Mr C Lamb	Academy	Boys	For Sport/Music only
Enfield Grammar Upper School (12) Market Place, Enfield, EN2 6LN				
Heron Hall Academy (13) Queensway, Ponders End, EN3 4SA	Mr A Barzey	Academy	Mixed	No
Highlands (14) Worlds End Lane, Winchmore Hill, N21 1QG	Mr V McInerney	Community	Mixed	No
Kingmead (15) Southbury Road, Enfield, EN1 1YQ	Mr D Medway	Academy	Mixed	For Art/Drama/Music only
Lea Valley Academy (16) Bullmoor Lane, Enfield, EN3 6TW	Mr S Kinson	Academy	Mixed	No
Oasis Academy Enfield (17) Kinetic Crescent, Innova Park, Mollison Avenue, Enfield, EN3 7XH	Mr A Williams	Academy	Mixed	No
Oasis Academy Hadley (18) South Street, Ponders End, Enfield, EN3 4PX	Ms Z Thompson	Academy	Mixed	No
St Anne's Lower School (19) London Road, Enfield, EN2 6EL	Mrs E Loveland	Voluntary Aided	Girls	Yes
St Anne's Upper School (20) Oakthorpe Road, Palmers Green, N13 5TY				
St Ignatius College (21) Turley Street, Enfield, EN1 4NP	Mrs M O'Keefe	Voluntary Aided	Boys	Yes
Southgate (22) Sussex Way, Cockfosters, EN4 0BL	Mr M Laville	Academy	Mixed	No
The Latymer School (23) Hazelbury Road, Edmonton, N9 9TN	Mrs M Cobbett	Voluntary Aided / Selective	Mixed	Registration Form
Winchmore (24) Laburnum Grove, Winchmore Hill, N21 3HS	Mr J Owen	Community	Mixed	No
Wren Academy (25) Turin Road, Edmonton, N9 8DQ (Temporary location. From September 2021 the school will be located on the Chase Farm Hospital site)	Mr G Smith	Academy	Mixed	Yes



# ADMISSION CRITERIA



- ✱ Rules used to decide which children are offered places when there are more applications than places available
- ✱ Rules may differ between local authorities and types of schools
- ✱ Check school and LA websites in case there are any changes to the information given in LA booklets



# **COMUNITY SCHOOL ADMISSION CRITERIA**

**(Summary see booklet for full details)**

- Children in public care or previously adopted
- children for whom a particular school is appropriate on genuine medical grounds
- Children with a brother or sister attending the school at the time of admission (living at the same address)
- Children of members of staff
- Children living nearest to the school measured as the 'crow flies'



# Exceptions

- ✦ **Chace Community School has priority zones for nominated roads**
- ✦ **Enfield County has a quota system of allocation** (*Full details are given in the “Your Guide to Secondary Schools in Enfield” brochure, available online*).



# Partially or Fully selective schools

- ✪ Selective schools will be testing children before the closing date for applications
- ✪ Children need to be registered directly with the schools to be entered for the relevant selective test/trials/auditions
- ✪ Schools will let parents have the results of the test/trials/auditions before the closing date for the Borough application form



# Partially or Fully selective schools

- ⚡ If results are not available before 31 October closing date, you will still need to include the school in your application
- ⚡ If, after receiving information about the outcome of the test, you want to change your preferred schools, you should make this request as soon as possible and no later than 9<sup>th</sup> December.
- ⚡ Further details on Enfield's website

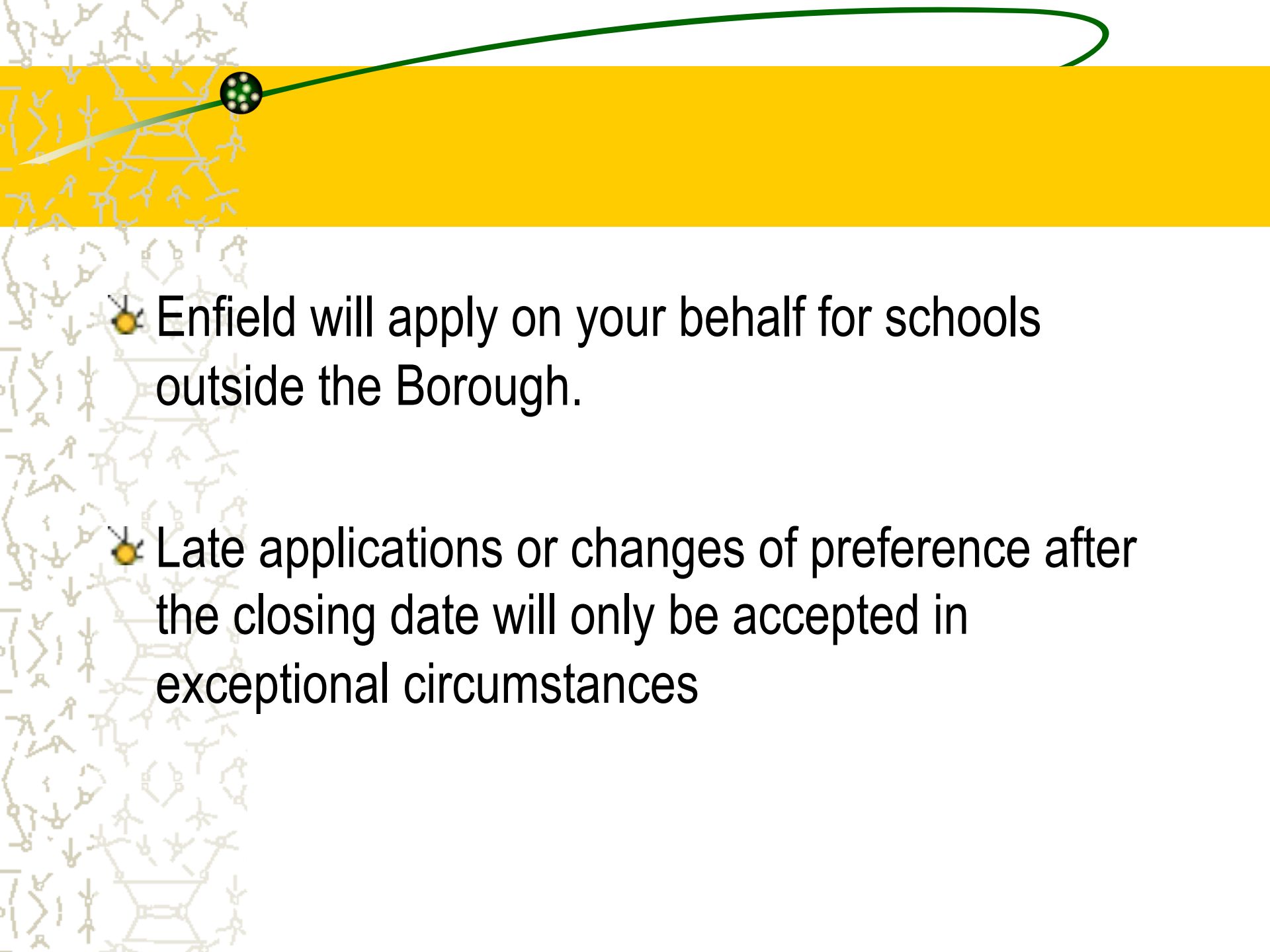


## **WHAT CAN ENFIELD PARENTS EXPECT ?**

- ***One* LA application form to be used for all maintained schools regardless of LA**
- **Common closing date for the submission of forms – 31<sup>st</sup> October 2020**

# ● What can Enfield parents expect?

- 6 preferences of secondary schools (only 4 for Hertfordshire)
- equal consideration given to each school asked for
- Enfield will apply on your behalf for schools outside the Borough
- late applications or changes of preference will only be accepted after closing date in exceptional circumstances





✦ Enfield will apply on your behalf for schools outside the Borough.

✦ Late applications or changes of preference after the closing date will only be accepted in exceptional circumstances



# **What can Enfield parents expect?**

-  **If your child is eligible for more than one school, the preference order will be used to decide the final offer**
-  **single offer emailed to parents/carers**
  - 1<sup>st</sup> March 2021**

# How to apply [www.edmissions.org.uk](http://www.edmissions.org.uk)

## Welcome to eAdmissions

### First time visitors

Create a new account.



[Register](#)

### Returning visitors

Sign into an existing account.



[Sign in](#)

### Find schools

In your area.



[Find](#)

## Important information

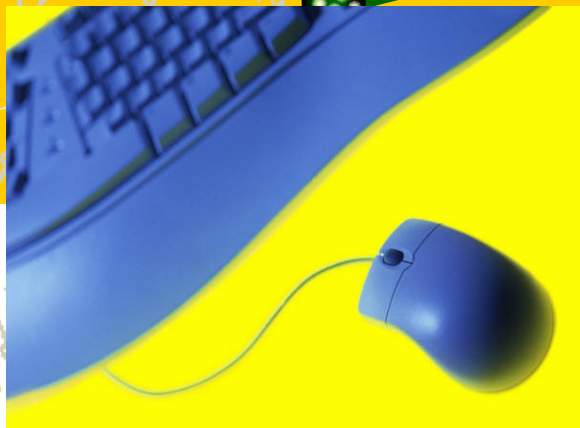
From the 1st September 2020, you can apply for a school place for the year starting September 2021. You can apply for a place in:

- A Primary school (Reception)
- A Junior school (Year 3)
- A Secondary school (Year 7)

In some areas you can apply for a place in:

- A Nursery class or school (Age 3+)
- A University Technical College (Year 10)

This website is funded and supported by 33 London authorities and Surrey County Council.



# Online applications

- It is quick and easy to do – just register and follow the instructions
- You will get an email confirmation once you submit your application
- The online system checks that you are completing all the right sections of the application
- The online system is available 24 hours a day, 7 days a week until midnight on the closing date
- You can get your result on the evening of **1<sup>st</sup> March 2021** and either accept and decline your offer on line



# Making your application

Make sure you say ...

- If the child is looked after or adopted?
- Are there brothers or sisters attending any of the schools you apply for?
- Does a parent work at any of the schools listed on your form?
- Provide supporting information with your application if you are asking for medical priority
- Be sure the address you use is the child's usual place of residence. Attach details if not
- Ensure you include your council tax reference number in your application.
- Complete any supplementary forms and send them directly to the schools
- Meet all the deadlines

# CHECKLIST

## Before you fill in the form

- Visit schools you are interested in, especially those in the local area
- Distance counts for many schools and will be a deciding factor
- Outside Enfield get the relevant information booklet or check their website
- Check you may need to complete a supplementary information form and send them directly to the school
- Complete all forms in full
- Be sure the address you use is the child's usual place of residence. Attach details if not
- Ensure you include your council tax reference number in your application.
- Nominating only one school or the same school six times will not improve your chance of getting a place.
- Be realistic

***Good Luck!***



# Enfield Schools - What happened this year

The furthest distance the LA offered places for  
**admission in September 2020** on offer day  
**(1<sup>st</sup> March 2020).**

- ARK John Keats - 0.346 miles
- Aylward - 1.512 miles
- ✎ Edmonton County - 1.145 miles
- ✎ Heron Hall - 1.518 miles
- ✎ Highlands - 0.843 miles
- ✎ Kingsmead - 0.916 miles
- ✎ Oasis Academy Hadley – 1.926 miles
- ✎ Southgate – 1.996 miles
- ✎ Winchmore – 0.836 miles



## SECONDARY TRANSFER for SMAB PUPILS

### last academic year **SEPTEMBER 2020**

1	Aylward Academy
3	Ashmole
1	Alexandra Park
11	Broomfield
1	Chase Community
1	East Barnet
1	Edmonton County
1	Enfield County
2	Enfield Grammar
4	Hartlands
1	Monk Walk Academy - Welwyn
2	St Andrew The Apostle
1	St Annes

4	St Thomas More
1	Southgate
4	Winchmore Hill
27	Woodside High
1	Queen Elizabeth Girls
1	Move out of the area
1	Left the country